



The Mount Rosemary Lane Farnham Surrey

4 3

A stunning detached home situated in an unmade lane, within the much sought after village of Rowledge. The property occupies a fabulous mature plot of 0.2 acres. The extended and well presented accommodation includes a spacious entrance hall, living room with log burner, family room, study with cast iron fire place, utility room and cloakroom. The hub of the home is the spectacular kitchen/dining room with large roof lanterns and bifold doors to the rear garden. The bespoke, handmade kitchen offers a huge island unit and an abundance of cupboards and drawers, a full range of Siemens appliances, hot tap, wine fridge and a walk in pantry. This fantastic space is perfect for day to day family living as well as entertaining. On the first floor there are four double bedrooms, two with en-suite facilities, and a family bathroom. The beautiful rear garden offers a large lawned area and full width patio, a 16'x8' workshop/shed with light and power, and a further

Price : Price Guide £1,500,000
EPC EER : 68
EPC EER Potential : 80
View : <https://www.keatsfearn.co.uk/sale/surrey/rowledge/farnham/residential/detached/8016854>



James Fearn
01252 718018

Rosemary Lane, Rowledge, Farnham, GU10

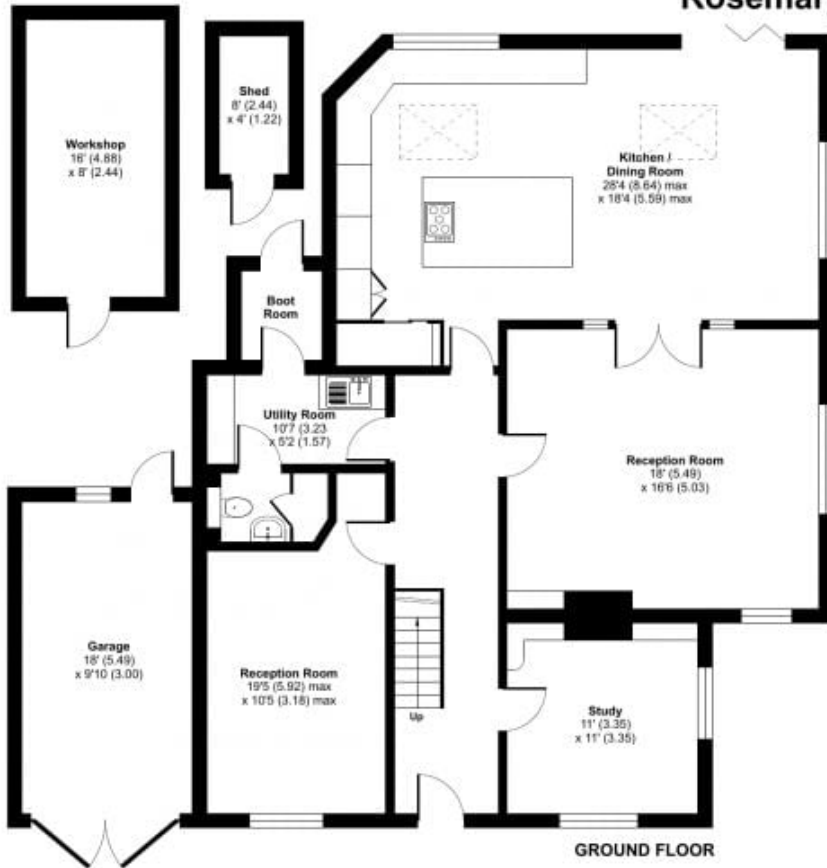
Approximate Area = 2229 sq ft / 207 sq m

Garage = 177 sq ft / 16.4 sq m

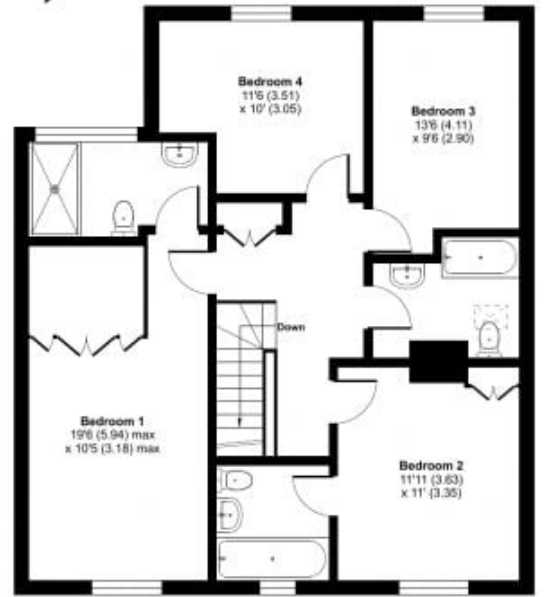
Workshop / Shed = 160 sq ft / 14.8 sq m

Total = 2566 sq ft / 238.2 sq m

For identification only - Not to scale



GROUND FLOOR



FIRST FLOOR



Floor plan produced in accordance with RICS Property Measurement Standards incorporating International Property Measurement Standards (IPMS2 Residential). © nichacom.2024. Produced for Keats Feam Limited. REF: 1134899

