



## 26 Crosby Way Surrey

\*\*\* VIEWINGS Saturday 6th July between 2 and 4pm by appointment \*\*\* Ground Floor: Covered Porch External light. Hall Telephone point, stairs to first floor. Cloakroom/w.c. Pedestal wash basin with tiled splashback. Kitchen Range of matching floor and wall units, worktops with inset sink, tiled splashback, 4 ring hob with light/extractor over, built in oven under, free standing fridge/freezer, dishwasher and washing machine, concealed gas fired central heating boiler. Opening to: Breakfast Room Deep understairs storage cupboard, double glazed sliding patio doors leading to the rear garden.

First Floor: Landing Panelled doors to all rooms, stairs to 2nd floor. Lounge Twin windows overlooking the rear garden and meadows beyond. Bedroom 3 Double glazed window to front. Family Bathroom Attractively part tiled, quality white suite comprising panelled bath with mixer

3 2

**Price** : Price Guide £2,250

**View** : <https://www.keatsfearn.co.uk/to-let/-/farnham/surrey/residential/townhouse/8047321>

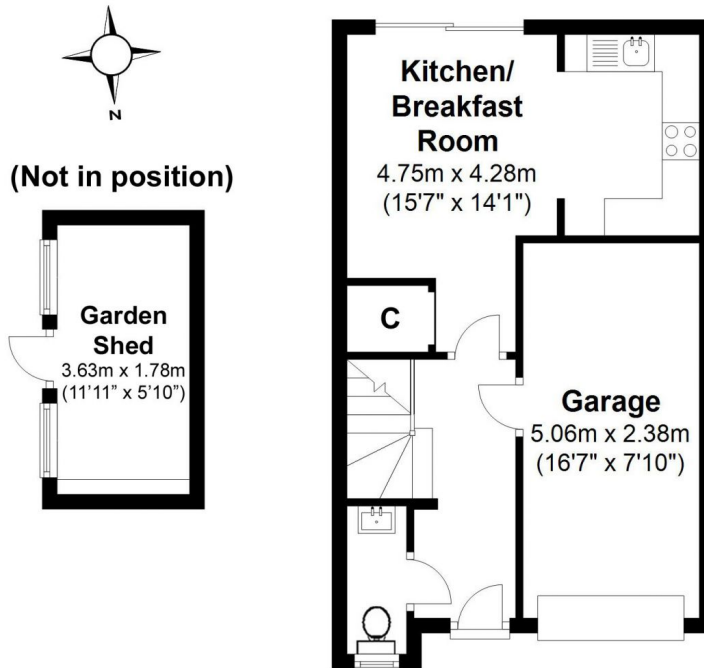


**James Fearn**  
01252 718018

# 26 Crosby Way, Farnham, GU9 7XG

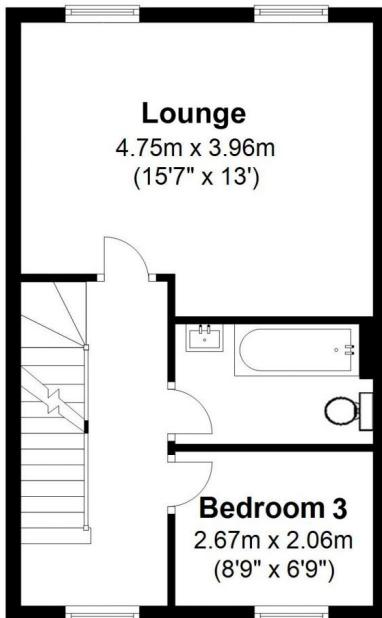
## Ground Floor

Approx. 37.7 sq. metres (406.3 sq. feet)



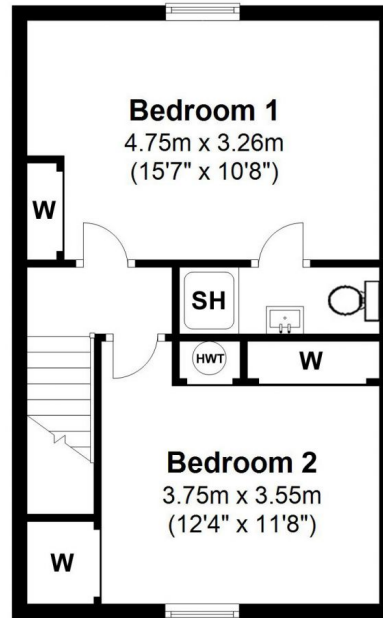
## First Floor

Approx. 37.3 sq. metres (401.3 sq. feet)



## Second Floor

Approx. 37.5 sq. metres (403.9 sq. feet)



House area: approx. 100.6 sq. metres (1082.8 sq. feet)

Garage & Outbuilding area: approx. 18.5 sq. metres (199.1 sq. feet)

Total area: approx. 107.1 sq. metres (1152.8 sq. feet)

This plan is for layout guidance only.  
Measurements are for general guidance  
only and must not be relied upon