



## Harveys. 17 Frensham Vale Farnham Surrey

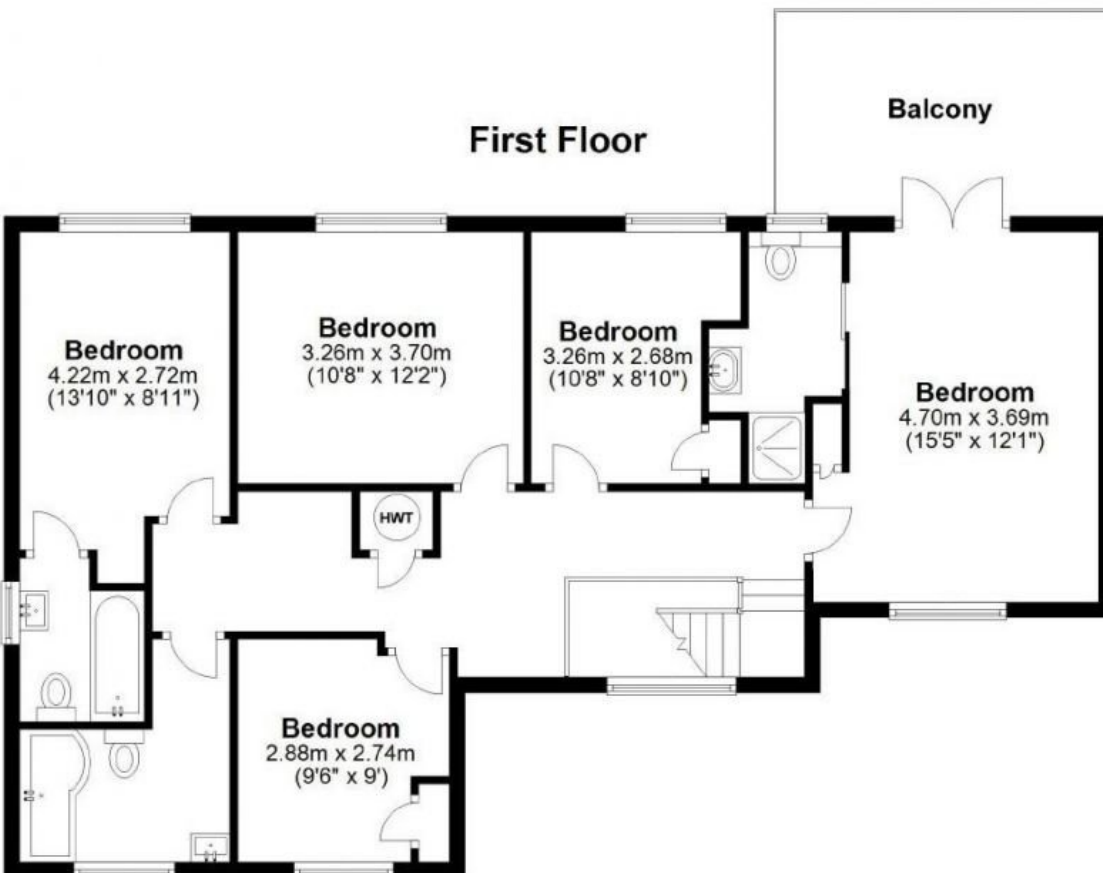
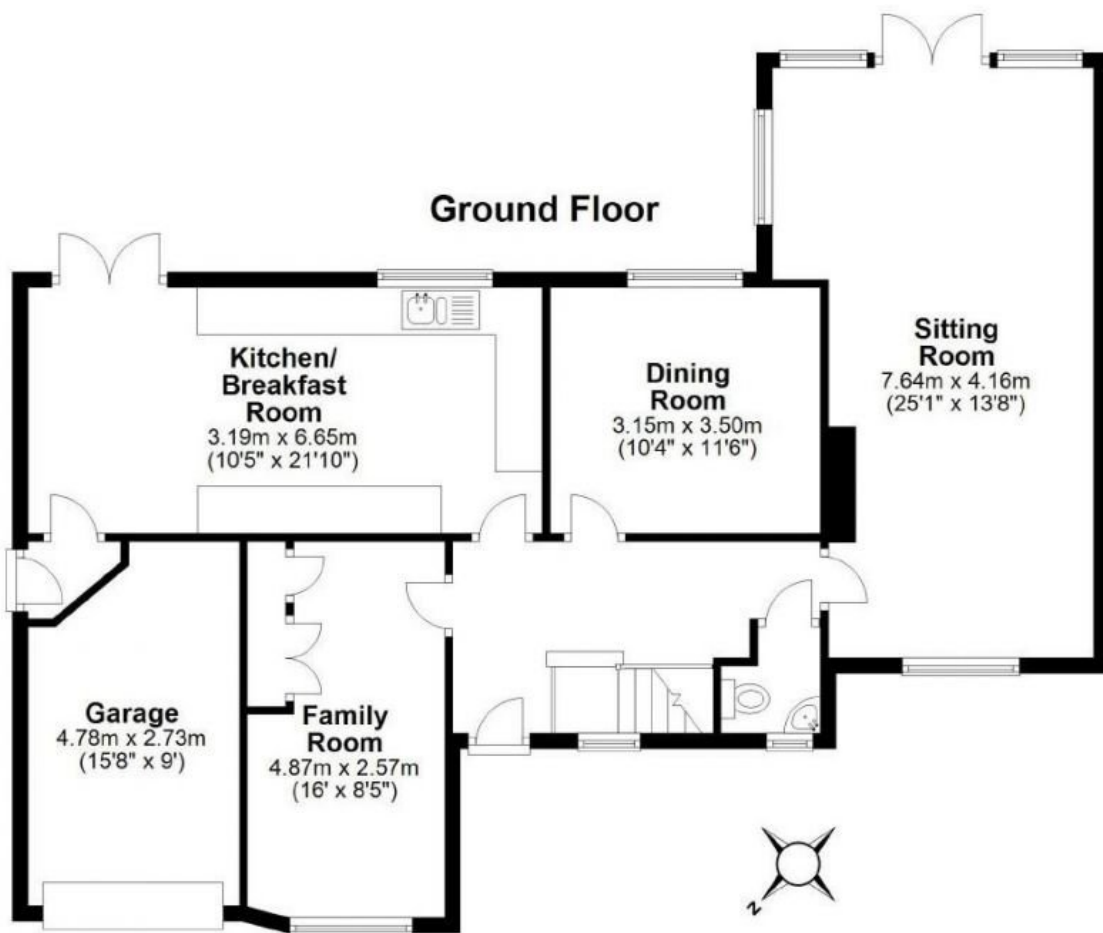
5 3

An extremely well appointed and spaciouly designed detached family home on a southerly facing plot of circa 0.22 acres, set in a desirable residential area of south Farnham convenient to all amenities. The Georgian town centre of Farnham offers a comprehensive range of shopping, recreational and cultural pursuits, with bustling cobbled courtyards boasting many shops, caf&eacute;s and an excellent choice of restaurants. There is a Waitrose, Sainsbury's, Leisure Centre, David Lloyd Club, local Rugby, Football and Tennis clubs, and Farnham's historic deer park offering over 300 acres of beautiful open countryside, providing opportunities for walking, cycling and dog walking. There is an excellent choice of both state and private schools in the area including Edgeborough, Waverley Abbey, South Farnham School, Weydon Secondary School, Frensham Heights, St. Edmund's and Barfield.

**Price** : Price Guide £1,345,000  
**EPC EER** : 56  
**EPC EER Potential** : 74  
**View** : <https://www.keatsfearn.co.uk/sale/surrey/lower-bourne/farnham/residential/detached/8049982>



**James Fearn**  
01252 718018



Total area: approx. 224.4 sq. metres (2415.2 sq. feet)  
 This plan is for layout guidance only.  
 Measurements are for general guidance  
 only and must not be relied upon