



## Flat 5, St Andrews Court FARNHAM Surrey

3 1

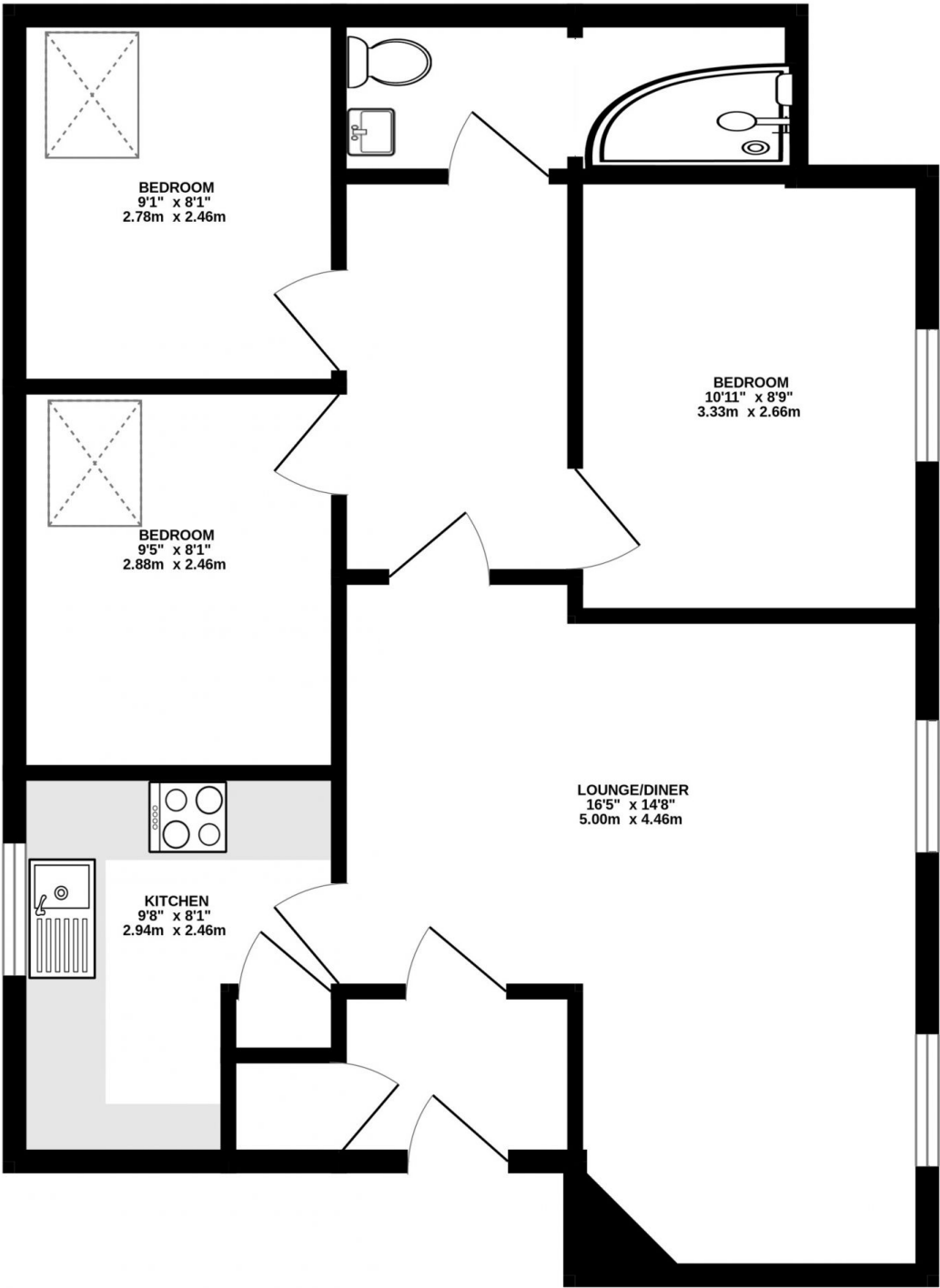
St Andrews Court is an exclusive development of quality apartments, built around the 1980's, conveniently located within walking distance of Farnham's elegant Georgian centre and mainline station, which offers a fast regular service to Waterloo. This apartment occupies one of the better positions on the ground floor, and enjoys the benefit of gas-fired central heating and partial upvc sealed unit double glazed windows. There is an entry phone linked to the main outer door and the accommodation has just recently been fully refurbished.

**Price** : Price Guide £1,500  
**EPC EER** : 68  
**EPC EER Potential** : 77  
**View** : <https://www.keatsfearn.co.uk/to-let/surrey/downing-street/farnham/residential/flat/8092685>



**James Fearn**  
01252 718018

GROUND FLOOR  
655 sq.ft. (60.9 sq.m.) approx.



TOTAL FLOOR AREA : 655 sq.ft. (60.9 sq.m.) approx.

Whilst every attempt has been made to ensure the accuracy of the floorplan contained here, measurements of doors, windows, rooms and any other items are approximate and no responsibility is taken for any error, omission or mis-statement. This plan is for illustrative purposes only and should be used as such by any prospective purchaser. The services, systems and appliances shown have not been tested and no guarantee as to their operability or efficiency can be given.  
Made with Metropix ©2024