



37 Whitmore Green Surrey

** Viewing days 23rd - 24th September ** A 3 bedroom end of terrace home situated in a popular location to the north side of Farnham. The accommodation includes a spacious entrance hall, re-fitted kitchen/breakfast room, lounge, 3 bedrooms and a well-appointed bathroom. Outside the property benefits from a garage in a nearby block with 2 parking spaces and additional ample parking. Whitmore Green is ideally suited for access to local amenities and schools and is also well placed for road links including the A325, A31 and A331. The house is also located within 2 miles of Farnham Station, with its regular service to Waterloo, and the elegant Georgian town centre with its wide selection of shops, pavement cafes and restaurants. The property benefits from all mains services, the water supply is metered, and the house has gas central heating. Ultrafast broadband is available in the area and mobile phone signal is likely with most providers, but

3  1 

Price : £ 1,650 per month
EPC EER : 60
EPC EER Potential : 81
View : <https://www.keatsfearn.co.uk/to-let/-/farnham/surrey/residential/end-of-terrace/8122437>

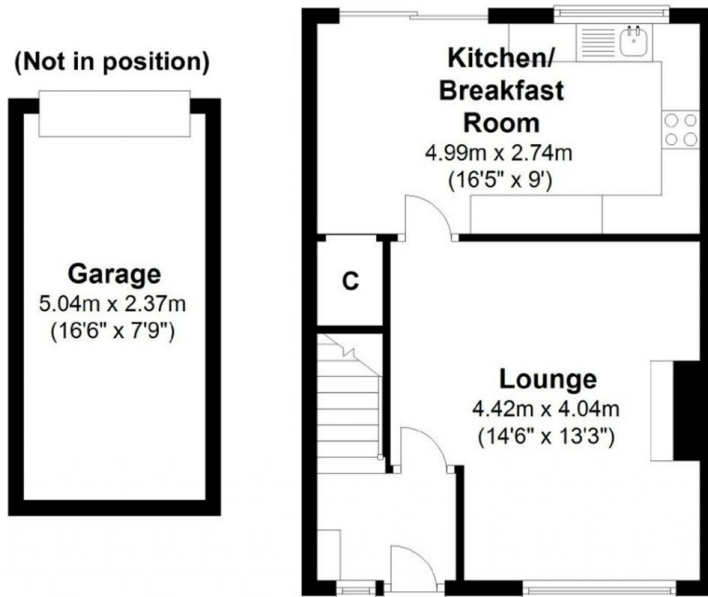


Derek Parsons
01252 718018

37 Whitmore Green, Farnham, GU9 9AF

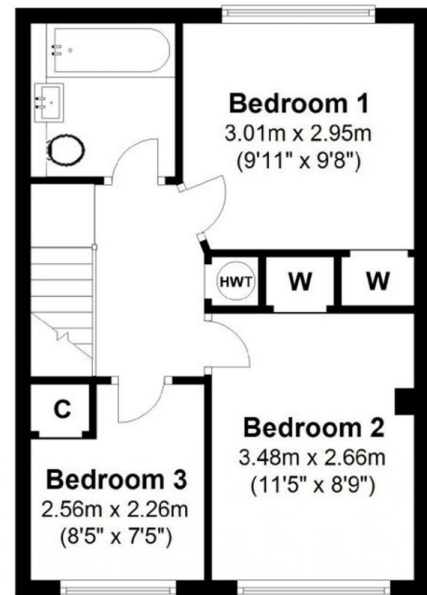
Ground Floor

Approx. 36.3 sq. metres (390.3 sq. feet)



First Floor

Approx. 36.3 sq. metres (391.0 sq. feet)



House area: approx. 72.6 sq. metres (781.5 sq. feet)

Garage area: approx. 11.9 sq. metres (128.1 sq. feet)

Total area: approx. 84.5 sq. metres (909.6 sq. feet)

This plan is for layout guidance only.
Measurements are for general guidance
only and must not be relied upon