

Dons Cottage, Green Lane Farnham Surrey

7 4

Star Features * Detached, family home * 5 Bedrooms and 2 Bath/shower rooms * Planning granted for 2 storey extension WA/2017/1975 * Secluded plot of over 0.75 acres * Garaging for 4 cars and paddock * Detached annexe with 2 beds/2 shower rooms and parking * Located behind automated gates with driveway for several cars * Potential for further additional dwelling subject to p/p * Potential for a variety of uses subject to necessary consents being obtained * Total floor area circa 3,078 sq ft A fabulous family home set on a large mature plot. The flexible accommodation would suit families of all ages and also offers the potential to create an annexe if required. The hub of the home is the kitchen/dining room, a light and spacious room with a part vaulted ceiling and skylight windows, as well as windows to the front and rear. The kitchen is fitted with a range of floor and wall mounted units, range cooker, dishwasher and space for an American

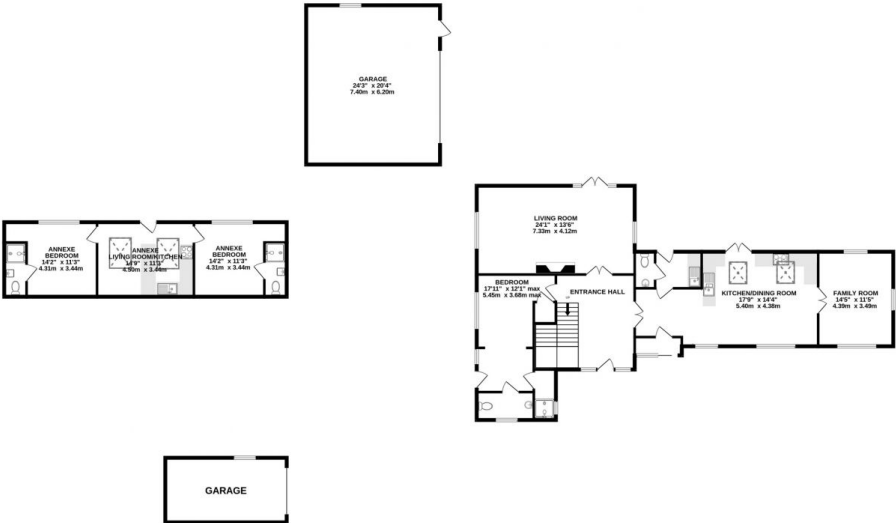
Price : Price Guide £1,399,995

View : <https://www.keatsfearn.co.uk/sale/surrey/badshot-lea/farnham/residential/detached/8145155>

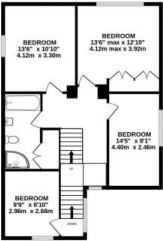


James Fearn
01252 718018

GROUND FLOOR
2497 sq.ft. (232.0 sq.m.) approx.



1ST FLOOR
763 sq.ft. (70.9 sq.m.) approx.



TOTAL FLOOR AREA : 3260 sq.ft. (302.9 sq.m.) approx.

Whilst every attempt has been made to ensure the accuracy of the floorplan contained here, measurements of doors, windows, rooms and any other items are approximate and no responsibility is taken for any error, omission or mis-statement. This plan is for illustrative purposes only and should be used as such by any prospective purchaser. The services, systems and appliances shown have not been tested and no guarantee as to their operability or efficiency can be given.

Made with Metropix ©2024

