



Mountbatten Lodge/Flat 17 The Hart Surrey

1 1

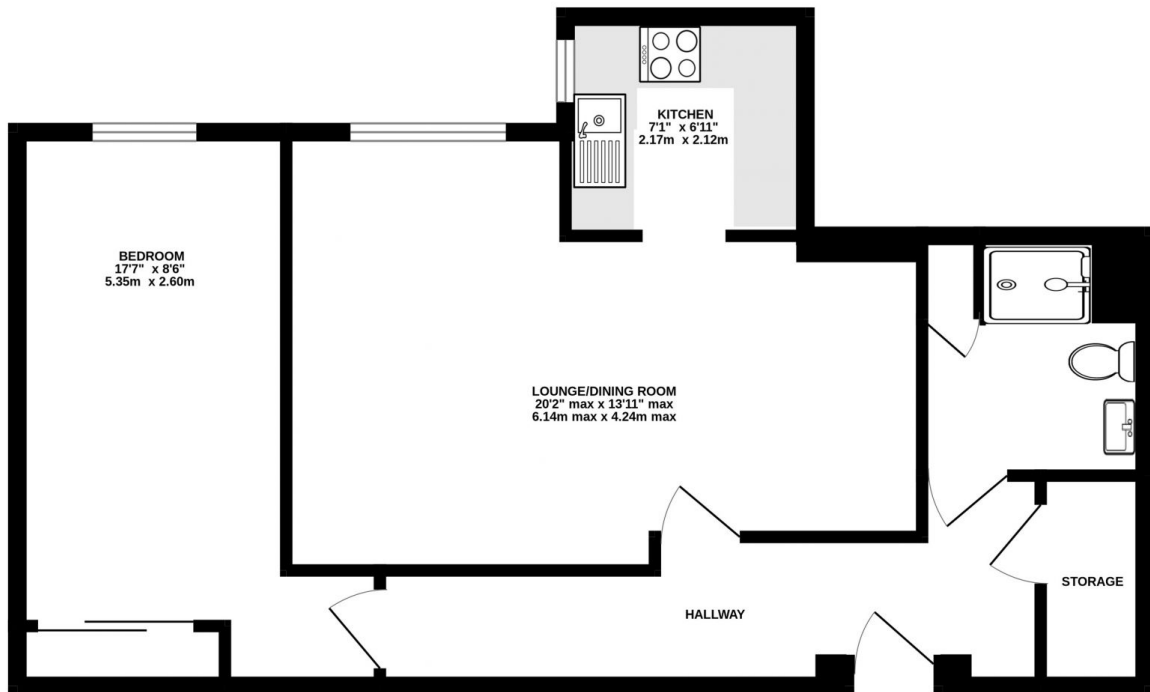
Mountbatten Lodge is a much sought after retirement development, in the heart of Farnham's elegant Georgian town centre, for the over 55's, within walking distance of many shops and amenities. The properties benefit from numerous facilities to be enjoyed by all residents, including parking, residents' lounge, laundry room, guest suite for visiting friends and family and lifts to all floors. Farnham is a market town in Surrey and known for its Georgian streets, historic buildings and craft heritage. There is a range of shops and independent boutiques, pubs, restaurants and cafes. Farnham Castle overlooks the town and it is within easy access to the North Downs Way National Trail. The beautiful Farnham Park is a 320 acre medieval deer park with a 1km tree lined avenue. Farnham is a few miles south of Guildford and well signposted from the A3, A31 and M3 motorway. Buses run from Farnham to surrounding areas and villages whilst the railway station is located just south

Price : Price Guide £248,000
EPC EER : 83
EPC EER Potential : 88
View : <https://www.keatsfearn.co.uk/sale/-/fanham/surrey/residential/house/8177024>



Derek Parsons
01252 718018

608 sq.ft. (56.5 sq.m.) approx.



TOTAL FLOOR AREA : 608 sq.ft. (56.5 sq.m.) approx.

Whilst every attempt has been made to ensure the accuracy of the floorplan contained here, measurements of doors, windows, rooms and any other items are approximate and no responsibility is taken for any error, omission or mis-statement. This plan is for illustrative purposes only and should be used as such by any prospective purchaser. The services, systems and appliances shown have not been tested and no guarantee as to their operability or efficiency can be given.
Made with Metropix ©2024